

# *iView* HMI Data Logging Tutorial

---



HMI solutions *you can view*

# Table Of Contents

---

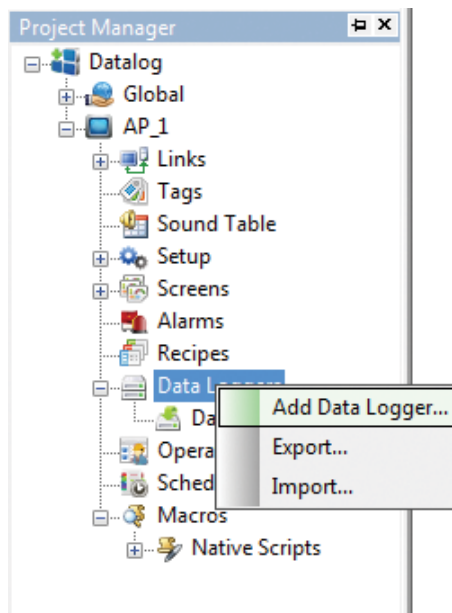
iView Data Logger.....	3
Data Logger - General.....	4
Data Logger - Data Item.....	5

Information in this document is subject to change without notice and does not represent a commitment on the part of IMO Precision Controls Ltd.

# iView Data Logger

There are two ways to open the dialog box of a data logger, as follows:-

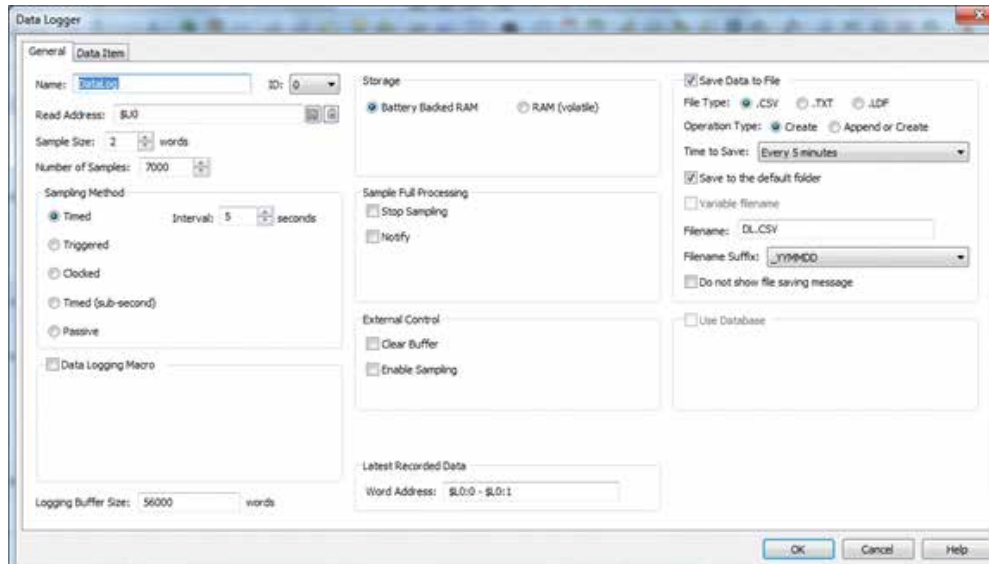
1. In the Project Manager window, right-click the node of the “Data Loggers” and select Add Data Logger



2. In the menu bar, click Panel to bring up the Panel sub-menu. Click Data Logger in the Panel sub-menu to bring up the Data Logger pop-up menu. Select Add in the pop-up menu to bring up the data logger.

In the Data Logger properties window as shown below, enter the settings as required.

## Data Logger - General



*Read Address* - This is the starting address of the register to be logged.

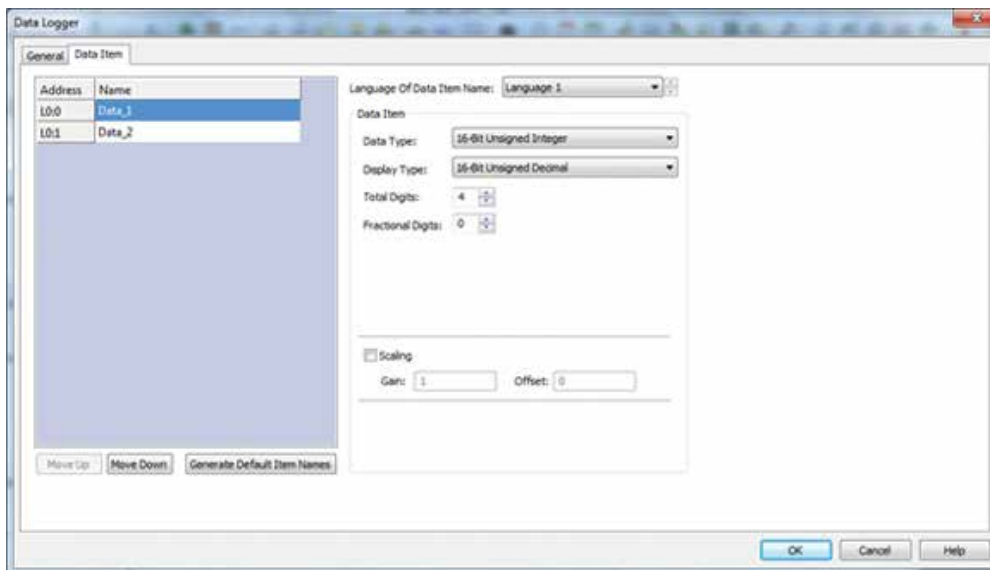
*Sample Size* - This is the number of registers required to be logged from the Read Address

*Number of Samples* - This is the number of samples required in logging operation.

*Sampling Method* - Choose the required method of sampling and this setting determines how often the sampling is taken.

The data logging by default is saved into the Storage medium specified under the 'Storage setting'. The 'Save Data to File' setting determines how often the buffer is cleared and written to the log file which can be a .txt, .csv or .ldf formatted file.

## Data Logger - Data Item



Enter the name of each item in the data logger so that the names of item is shown in the .csv file as shown below

Date	Time	Data_1	Data_2
12/02/2015	17:10:04	77	55
12/02/2015	17:10:09	77	55
12/02/2015	17:10:14	77	55
12/02/2015	17:10:19	77	55
12/02/2015	17:10:24	77	55
12/02/2015	17:10:29	77	55

## Programs

iView - Datalog R00215.pm3

## IMO Worldwide Offices

---

### **IMO Precision Controls Limited**

1000 North Circular Road  
Staples Corner  
London NW2 7JP  
United Kingdom

Tel: 020 8452 6444  
Fax: 020 8450 2274  
Email: [sales@imopc.com](mailto:sales@imopc.com)  
Web: [www.imopc.com](http://www.imopc.com)

### **IMO Automazione**

Via Ponte alle Mosse, 61  
50144 Firenze (FI)  
Italia

Tel: 800 930 872 (toll free)  
Fax: 8000 452 6445  
Email: [sales@imopc.com](mailto:sales@imopc.com)  
Web: [www.imopc.it](http://www.imopc.it)

### **IMO Russia**

Office N° 4063  
9, Zemlyanoy Val, 105064  
Moscow  
Russia

Tel: 8 800 100 8540 (toll free)  
Fax: 8 800 100 8541  
Email: [sales@imopc.com](mailto:sales@imopc.com)  
Web: [www.imopc.com](http://www.imopc.com)

### **IMO Jeambrun Automation SAS**

Centre D'Affaires Rocroy  
30, Rue de Rocroy  
94100 Saint-Maur-Des-Fosses  
France

Tel: 0800 912 712 (toll free)  
Fax: 0145 134 737  
Email: [sales@imopc.com](mailto:sales@imopc.com)  
Web: [www.imojeambrun.fr](http://www.imojeambrun.fr)

### **IMO Canada**

Unit 32 - B - North  
18 Stratheam Avenue, Brampton  
Ontario L6T 4Y2  
Canada

Tel: 905 799 9237 (local)  
Fax: 905 799 0450  
Email: [sales@imopc.com](mailto:sales@imopc.com)  
Web: [www.imopc.com](http://www.imopc.com)

### **IMO Pacific Pty Ltd**

1/34 Fallon Road  
Landsdale  
Perth WA 6065  
Australia

Tel: 08 9302 5246 (local)  
Fax: 08 9303 9908  
Email: [sales@imopacific.com.au](mailto:sales@imopacific.com.au)  
Web: [www.imopacific.com.au](http://www.imopacific.com.au)